



COVID-19 RESEARCH

*SUMMARY FINDINGS OF
GUAM RESIDENT & BUSINESS IMPACT SURVEY*



IMPACT ON BUSINESSES



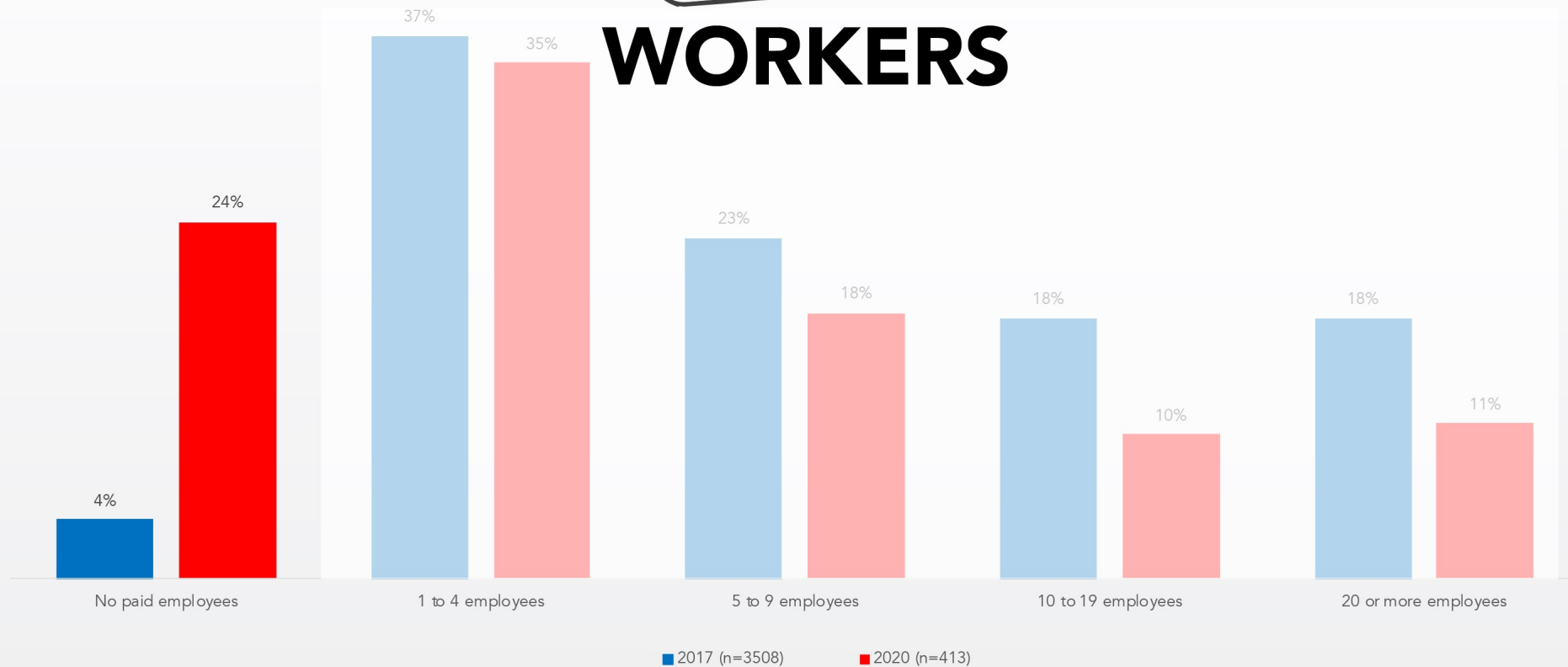


I'm going to read a list of ranges, please identify which range best describes the establishments' annual total revenue.²

Revenue Range	2017 (n=50)	2022 (n=418)
\$0-\$100K	0%	10%
\$100K-\$250K	0%	10%
\$250K-\$500K	0%	10%
\$500K-\$1M	0%	10%
\$1M-\$2M	0%	10%
\$2M-\$5M	0%	10%
\$5M-\$10M	0%	10%
\$10M-\$25M	0%	10%
\$25M-\$50M	0%	10%
\$50M-\$100M	0%	10%
\$100M-\$250M	0%	10%
\$250M-\$500M	0%	10%
\$500M-\$1M	0%	10%
\$1M-\$2M	0%	10%
\$2M-\$5M	0%	10%
\$5M-\$10M	0%	10%
\$10M-\$25M	0%	10%
\$25M-\$50M	0%	10%
\$50M-\$100M	0%	10%
\$100M-\$250M	0%	10%
\$250M-\$500M	0%	10%
\$500M-\$1M	0%	10%
\$1M-\$2M	0%	10%
\$2M-\$5M	0%	10%
\$5M-\$10M	0%	10%
\$10M-\$25M	0%	10%
\$25M-\$50M	0%	10%
\$50M-\$100M	0%	10%
\$100M-\$250M	0%	10%
\$250M-\$500M	0%	10%
\$500M-\$1M	0%	10%
\$1M-\$2M	0%	10%
\$2M-\$5M	0%	10%
\$5M-\$10M	0%	10%
\$10M-\$25M	0%	10%
\$25M-\$50M	0%	10%
\$50M-\$100M	0%	10%
\$100M-\$250M	0%	10%
\$250M-\$500M	0%	10%
\$500M-\$1M	0%	10%
\$1M-\$2M	0%	10%
\$2M-\$5M	0%	10%
\$5M-\$10M	0%	10%
\$10M-\$25M	0%	10%
\$25M-\$50M	0%	10%
\$50M-\$100M	0%	10%
\$100M-\$250M	0%	10%
\$250M-\$500M	0%	10%
\$500M-\$1M	0%	10%
\$1M-\$2M	0%	10%
\$2M-\$5M	0%	10%
\$5M-\$10M	0%	10%
\$10M-\$25M	0%	10%
\$25M-\$50M	0%	10%
\$50M-\$100M	0%	10%
\$100M-\$250M	0%	10%
\$250M-\$500M	0%	10%
\$500M-\$1M	0%	10%
\$1M-\$2M	0%	10%
\$2M-\$5M	0%	10%
\$5M-\$10M	0%	10%
\$10M-\$25M	0%	10%
\$25M-\$50M	0%	10%
\$50M-\$100M	0%	10%
\$100M-\$250M	0%	10%
\$250M-\$500M	0%	10%
\$500M-\$1M	0%	10%
\$1M-\$2M	0%	10%
\$2M-\$5M	0%	10%
\$5M-\$10M	0%	10%
\$10M-\$25M	0%	10%
\$25M-\$50M	0%	10%
\$50M-\$100M	0%	10%
\$100M-\$250M	0%	10%
\$250M-\$500M	0%	10%
\$500M-\$1M	0%	10%
\$1M-\$2M	0%	10%
\$2M-\$5M	0%	10%
\$5M-\$10M	0%	10%
\$10M-\$25M	0%	10%
\$25M-\$50M	0%	10%
\$50M-\$100M	0%	10%
\$100M-\$250M	0%	10%
\$250M-\$500M	0%	10%
\$500M-\$1M	0%	10%
\$1M-\$2M	0%	10%
\$2M-\$5M	0%	10%
\$5M-\$10M	0%	10%
\$10M-\$25M	0%	10%
\$25M-\$50M	0%	10%
\$50M-\$100M	0%	10%
\$100M-\$250M	0%	10%
\$250M-\$500M	0%	10%
\$500M-\$1M	0%	10%
\$1M-\$2M	0%	10%
\$2M-\$5M	0%	10%
\$5M-\$10M	0%	10%
\$10M-\$25M	0%	10%
\$25M-\$50M	0%	10%
\$50M-\$100M	0%	10%
\$100M-\$250M	0%	10%
\$250M-\$500M	0%	10%
\$500M-\$1M	0%	10%
\$1M-\$2M	0%	10%
\$2M-\$5M	0%	10%
\$5M-\$10M	0%	10%
\$10M-\$25M	0%	10%
\$25M-\$50M	0%	10%
\$50M-\$100M	0%	10%
\$100M-\$250M	0%	10%
\$250M-\$500M	0%	10%
\$500M-\$1M	0%	10%
\$1M-\$2M	0%	10%
\$2M-\$5M	0%	10%
\$5M-\$10M	0%	10%
\$10M-\$25M	0%	10%
\$25M-\$50M	0%	10%
\$50M-\$100M	0%	10%
\$100M-\$250M	0%	10%
\$250M-\$500M	0%	10%
\$500M-\$1M	0%	10%
\$1M-\$2M	0%	10%
\$2M-\$5M	0%	10%
\$5M-\$10M	0%	10%
\$10M-\$25M	0%	10%
\$25M-\$50M	0%	10%
\$50M-\$100M	0%	10%
\$100M-\$250M	0%	10%
\$250M-\$500M	0%	10%
\$500M-\$1M	0%	10%
\$1M-\$2M	0%	10%
\$2M-\$5M	0%	10%
\$5M-\$10M	0%	10%
\$10M-\$25M	0%	10%
\$25M-\$50M	0%	10%
\$50M-\$100M	0	

Compared to 2017, Guam's private sector experienced a 66 percent decline in its revenue-generating performance in 2020.







CLOSURES

4%



Four percent of businesses had to permanently close in 2020 due to COVID-19.





INNOVATION

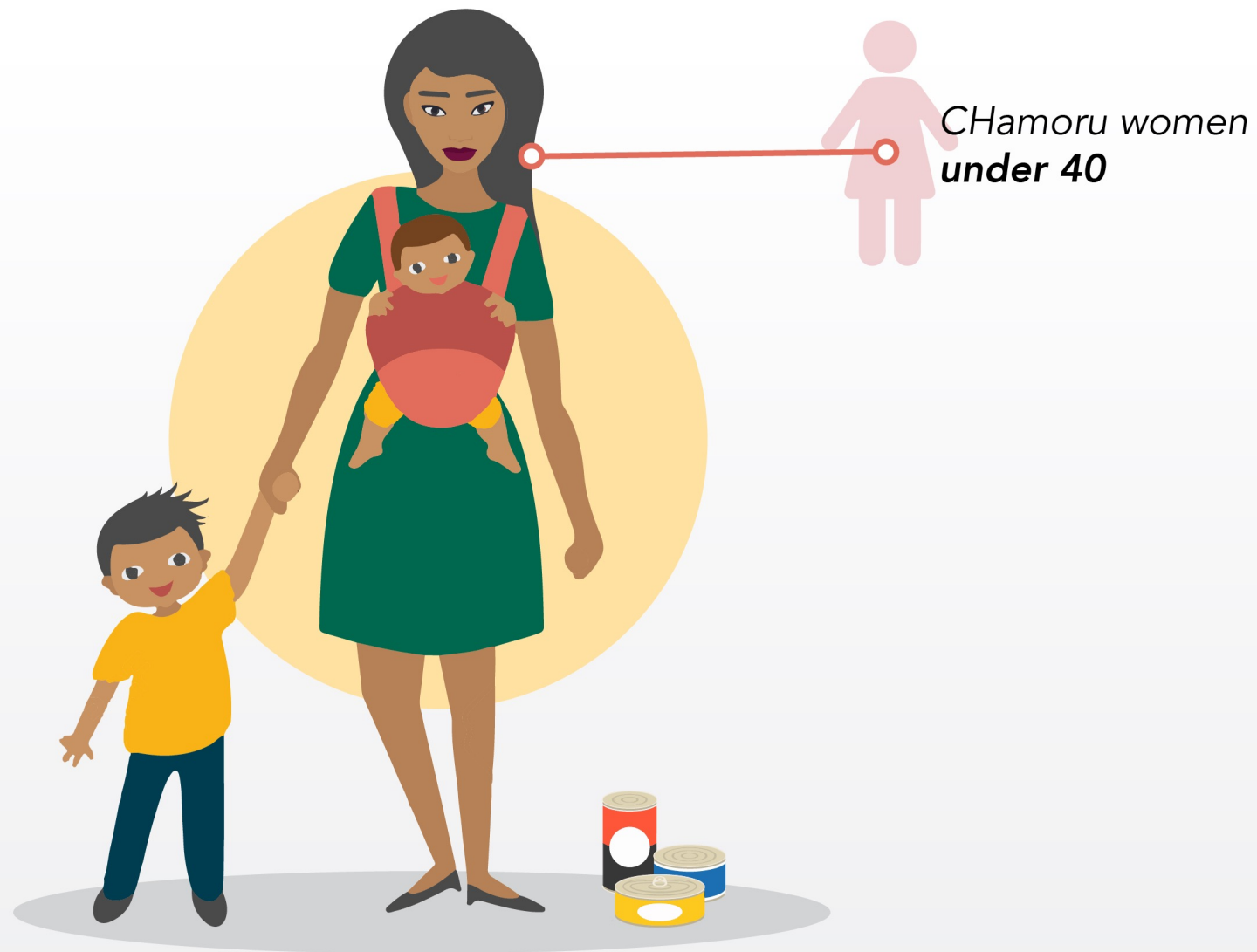




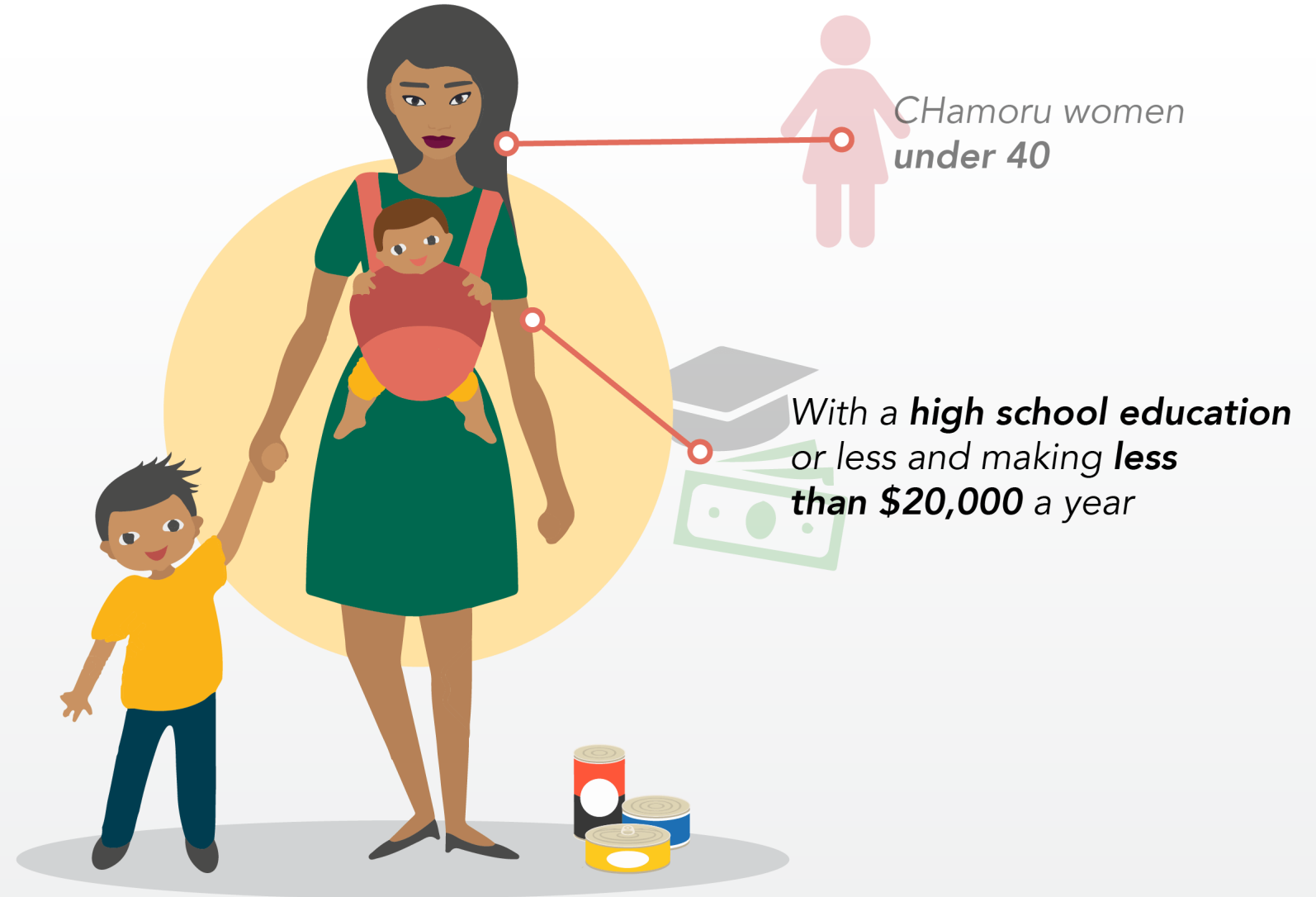
OUTLOOK



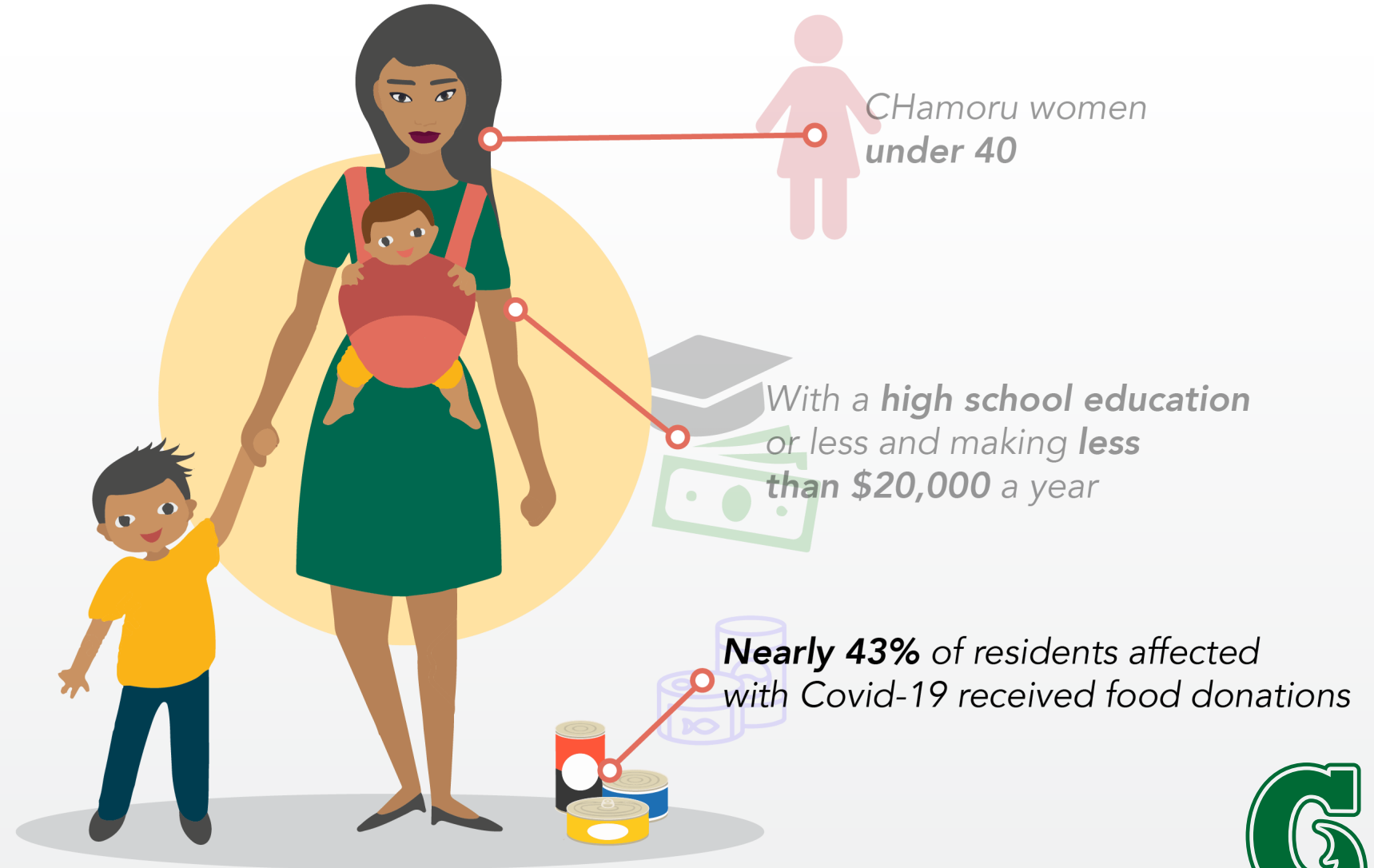
PORTRAIT OF THOSE MOST AFFECTED BY COVID-19



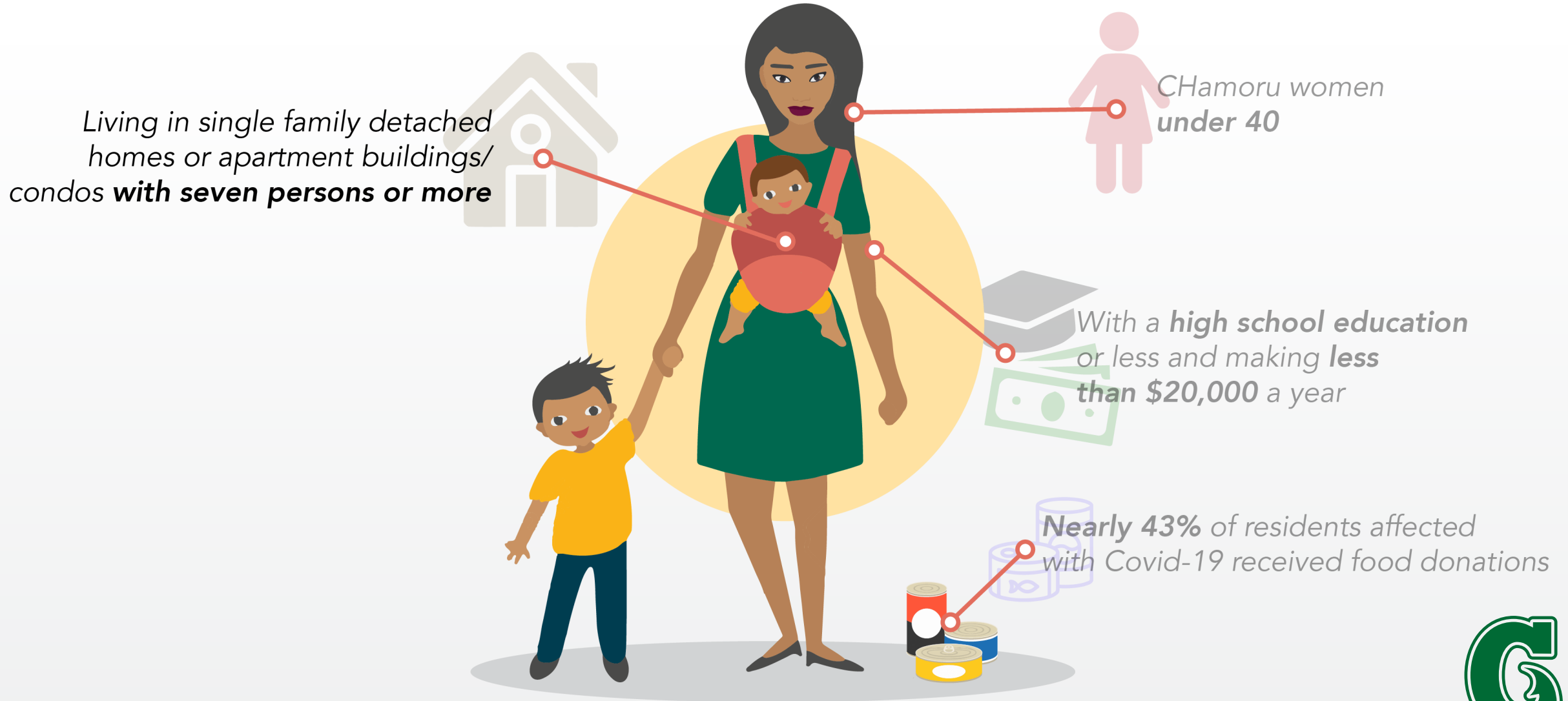
PORTRAIT OF THOSE MOST AFFECTED BY COVID-19



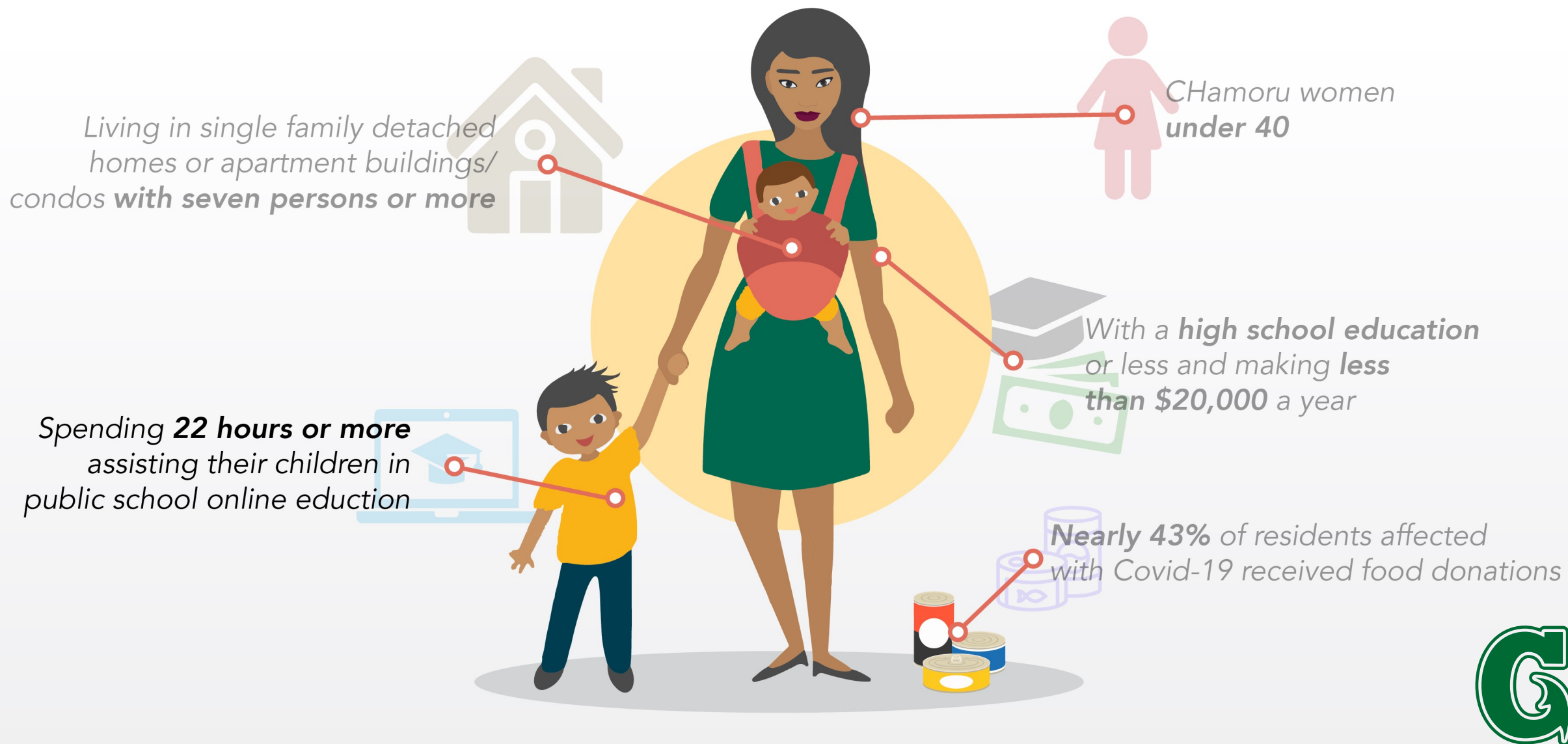
PORTRAIT OF THOSE MOST AFFECTED BY COVID-19



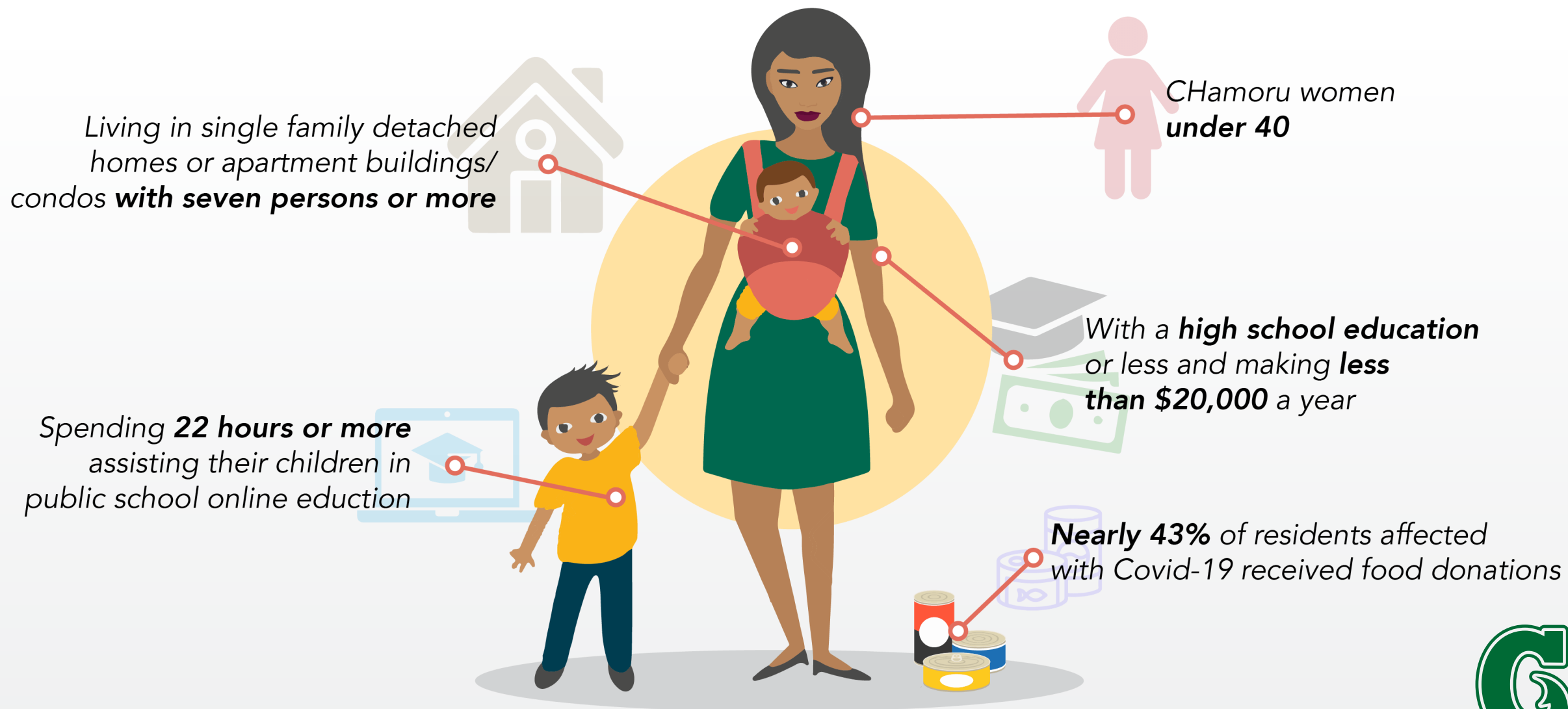
PORTRAIT OF THOSE MOST AFFECTED BY COVID-19

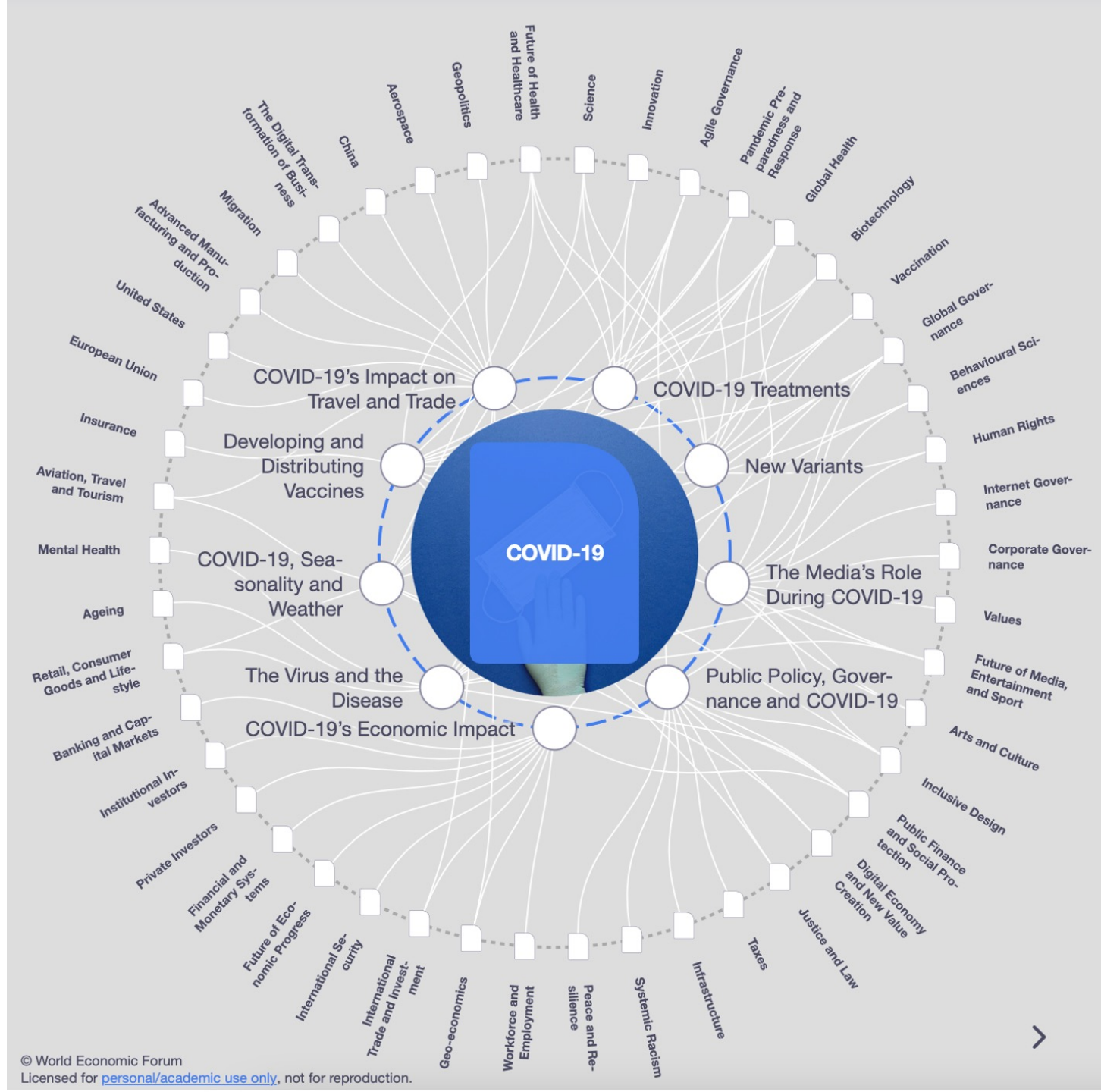


PORTRAIT OF THOSE MOST AFFECTED BY COVID-19



PORTRAIT OF THOSE MOST AFFECTED BY COVID-19







COVID-19 RESEARCH

*SUMMARY FINDINGS OF
GUAM RESIDENT & BUSINESS IMPACT SURVEY*